

**Angio Chest**

Siemens Flash

Application Examples: aneurysm, stenosis, vascular anomalies

Oral Contrast	1 glass water
IV Contrast / Volume	Omnipaque 350 / MedRad P3T
Injection Rate	P3T / 3.5 – 7 mL/sec

*Technical Factors*

Care Bolus ROI Location / HU	Aortic Arch / 150
Monitoring Delay	10 seconds
Cycle Time	1.5 seconds
Scan Delay	4 seconds
Breath Hold	Inspiration

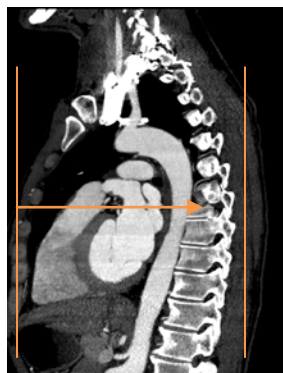
Detector Collimator	Acq 128 x 0.6 mm
Care kV	On / 120 kV
Care Dose 4D	On / 110 mAs
Rotation Time (seconds)	0.5
Pitch	1.2
Typical CTDIvol	6.23 mGy ± 50%

Topogram: Lateral and AP, 512 mm

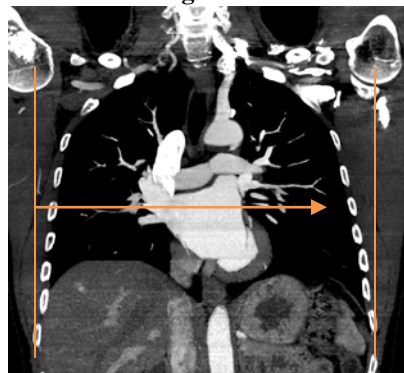
AngioChest	Recon Type	Width/Increment	Algorithm	Safire	Window	Series Description	Networking	Post Processing
Recon 1	Axial	3 x 3	I40f	2	Mediastinum	AXIAL	PACS	None
Recon 2	3D:COR	3 x 3	I30f	2	Angio	COR MIP	PACS	Coronal MIP
Recon 3	3D:SAG	3 x 3	I30f	2	Angio	SAG MIP	PACS	Sagittal MIP
Recon 4	3D:OBL	3 x 3	I30f	2	Angio	OBL MIP	PACS	Oblique MIP
Recon 5	Axial	0.6 x 0.6	I26f	2	Angio	AXIAL 0.6 STND	TR & PACS	None

**IV Placement:** ≥ 18 gauge, *preferably* in antecubital (AC) fossa.**Patient Preparation:** Give one glass of water just prior to scan.**Patient Position:** Patient lying supine with arms comfortably above head and lower legs supported.**Scan Instructions:** Place pre-monitoring ROI in aortic arch, away from any calcium deposits. If stent, do 3 minute delay through entire stent.**Scan Range:** Lung apices through celiac artery.**Recons and Reformats:** Adjust FoV to fit body contour.

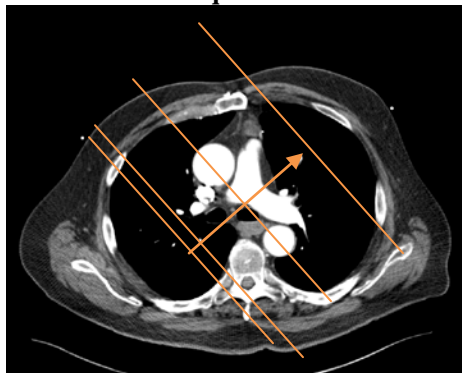
3x3 Coronal MIP



3x3 Sagittal MIP



3x3 Oblique MIP

**3D:** Upon request.