

**Sinus**

Siemens go.All

Application Examples: inflammatory diseases, sinusitis, nasal polyp, mucoccele

Oral Contrast	No
IV Contrast / Volume	No

*Technical Factors*

Scan Type	Spiral
Detector Collimator	Acq 32 x 0.7 mm
X-Care	ON
Care kV	On / Sn100
Care Dose 4D	On / 40 mAs
Rotation Time	1.0
Pitch	0.55
Typical CTDIvol	6.91 mGy $\pm$ 50%

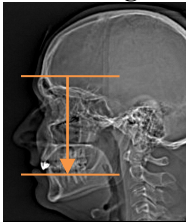
Topogram: Lateral, 256 mm

<b>Sinus</b>	<b>Recon Type</b>	<b>Width / Increment</b>	<b>Algorithm</b>	<b>Safire</b>	<b>Window</b>	<b>FoV</b>	<b>Series Description</b>	<b>Networking</b>	<b>Post Processing</b>
<b>Recon 1</b>	Axial	5 x 5	Hr64	2	Sinuses	120	AXIAL	PACS	None
<b>Recon 2</b>	3D:COR	3 x 3	Hr64	2	Sinuses	120	COR	PACS	Coronal MPR
<b>Recon 3</b>	3D:SAG	3 x 3	Hr64	2	Sinuses	120	SAG	PACS	Sagittal MPR

This protocol is in spiral mode and used for all routine paranasal sinuses studies.

**Patient Position:** Position patient so the IOML is perpendicular to the table and head is in a symmetrical position (no rotation or tilt).

**Scan Range:** Entire frontal sinus through bottom of the maxillary teeth.



**Recons and Reformations:** Coronal and sagittal MPRs are done in examination card using raw data and reconstructed perpendicular to hard palate.